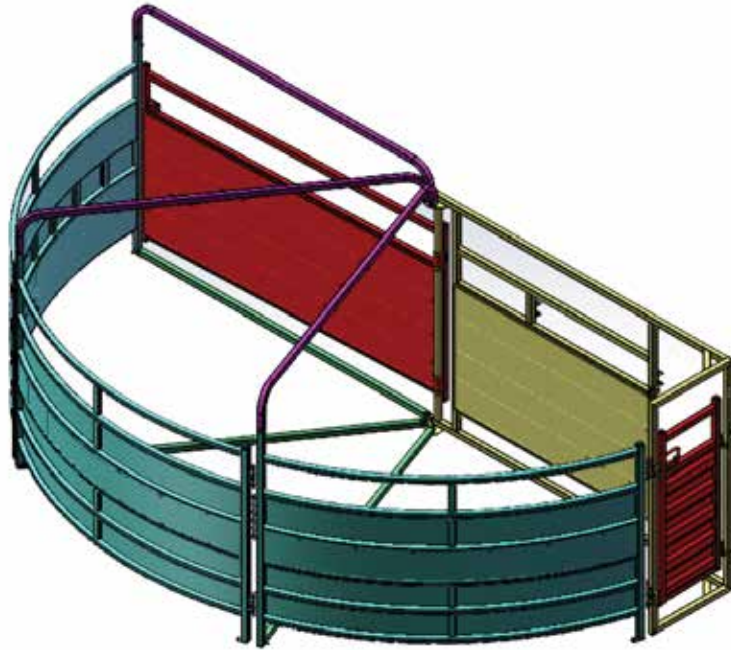


### Blind Sweep Force Yard



### Tools Recommended To Use



Ladder



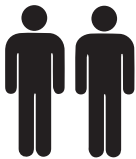
Long Socket for Drill  
(19mm or 3/4 inch to fit Rattle Gun)



Forklift or  
Two people



Ring Wrench/Spanner  
(16mm or 5/8 inch)



Hole Poker would help to line  
up the holes for the bolts



Battery Rattle Gun/  
Impact Wrench Drill



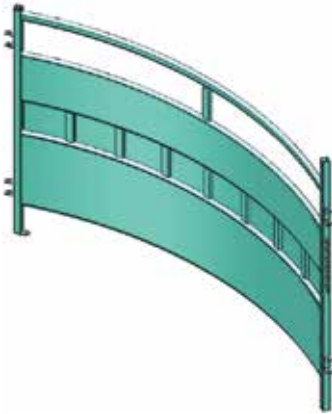
Rubber Hammer

### Part List

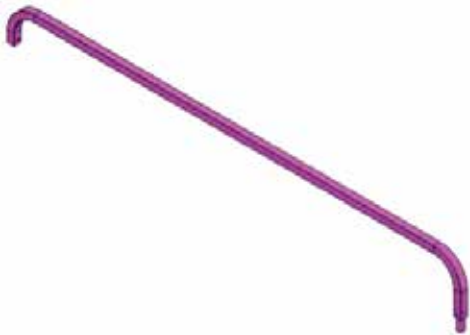
1 x LGate



3 x Curved Blind Panel



3 x Top Support Bar



3 x Ground Support Bar

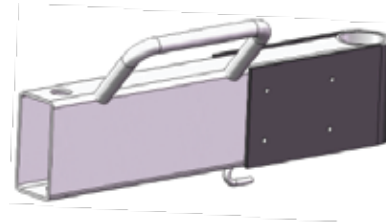


1 x Locking Handle

1 x Pin

1 x Split Pin

1 x Spring



6 x Bolts to Secure  
Top Support Bars



3 x Bolts to Secure  
Ground Support Bars



8 x Pins to Link Curved Panels



**Step 1:** The sweep needs to be on level ground.

Stand the L Gate up balanced using wood block under the swing gate up. Close the man gate as in the picture. The other opening is where the alley/race will go.

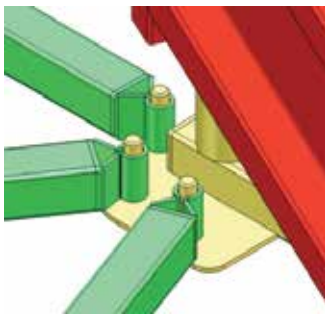
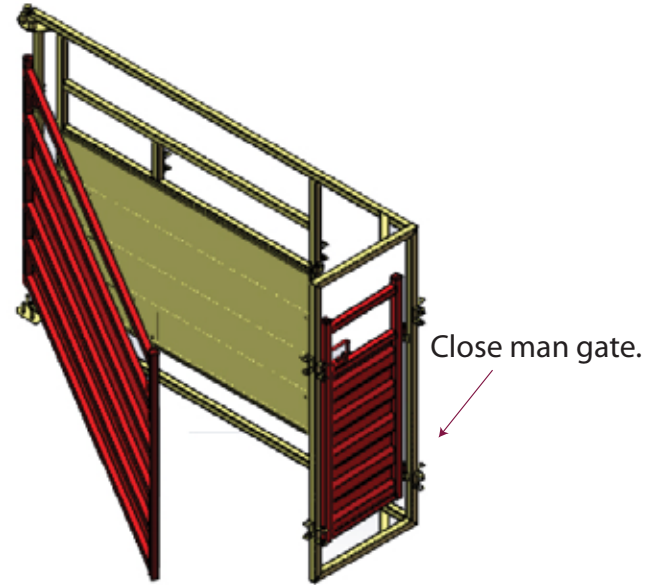
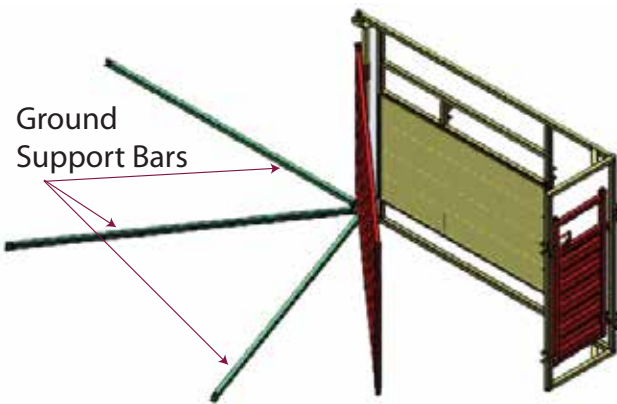


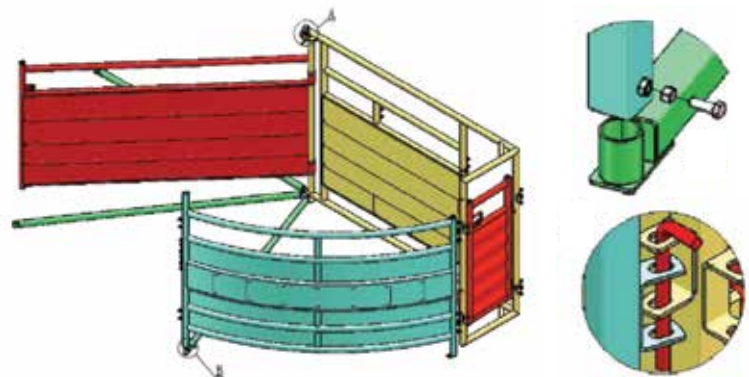
Diagram 2

Place a wood block to support L gate from tipping over.

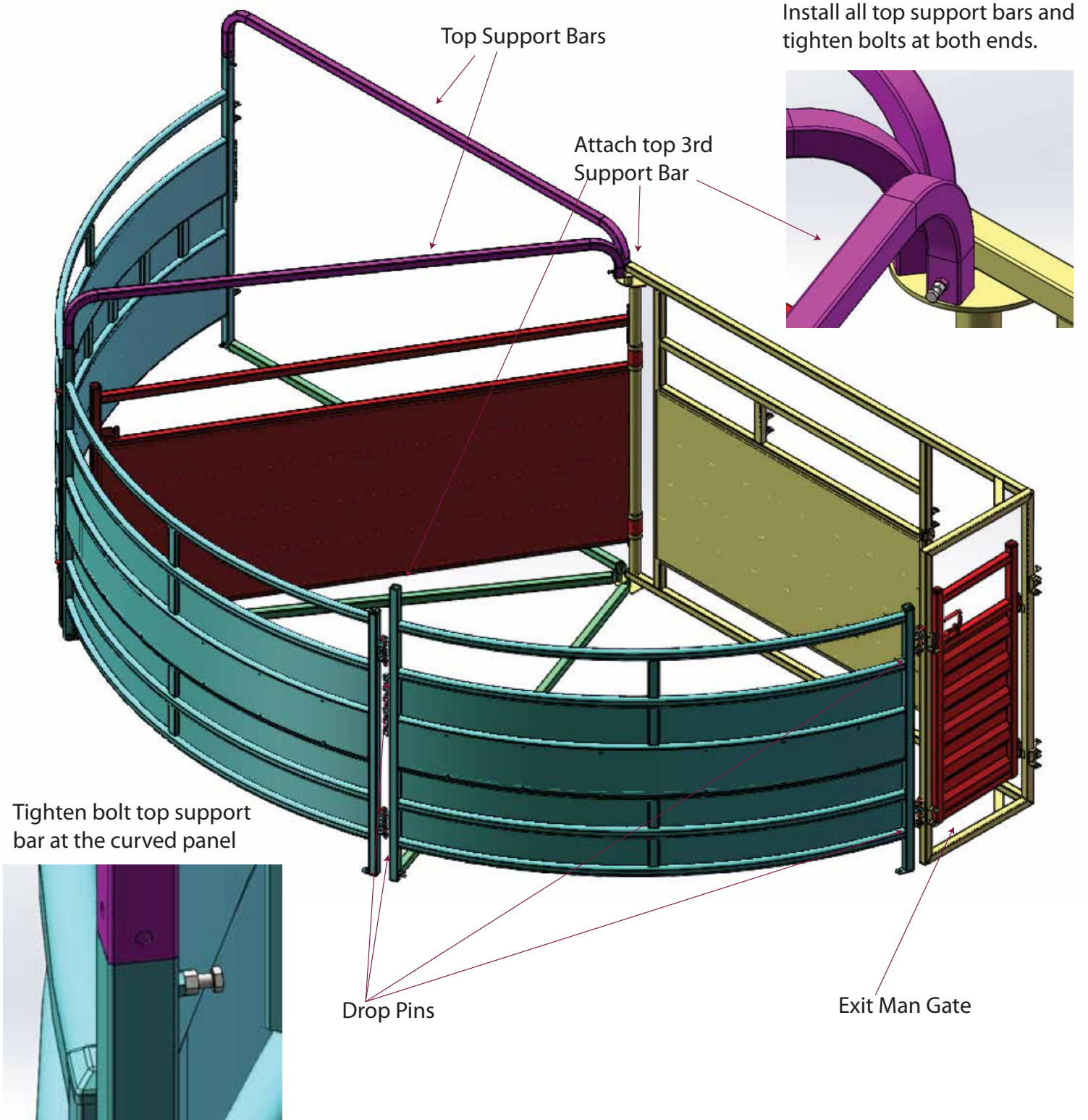


**Step 2:** Install ground support bars to the center support tree. The support tree connects the top and ground support bars. The bottom of the tree has fixed pins, the end of the ground support bar will slip over. Refer Diagram 2

**Step 3:** Take a curved panel and connect it with the pins to the C brackets. Then connect the ground support bar to the foot of the curved panel.

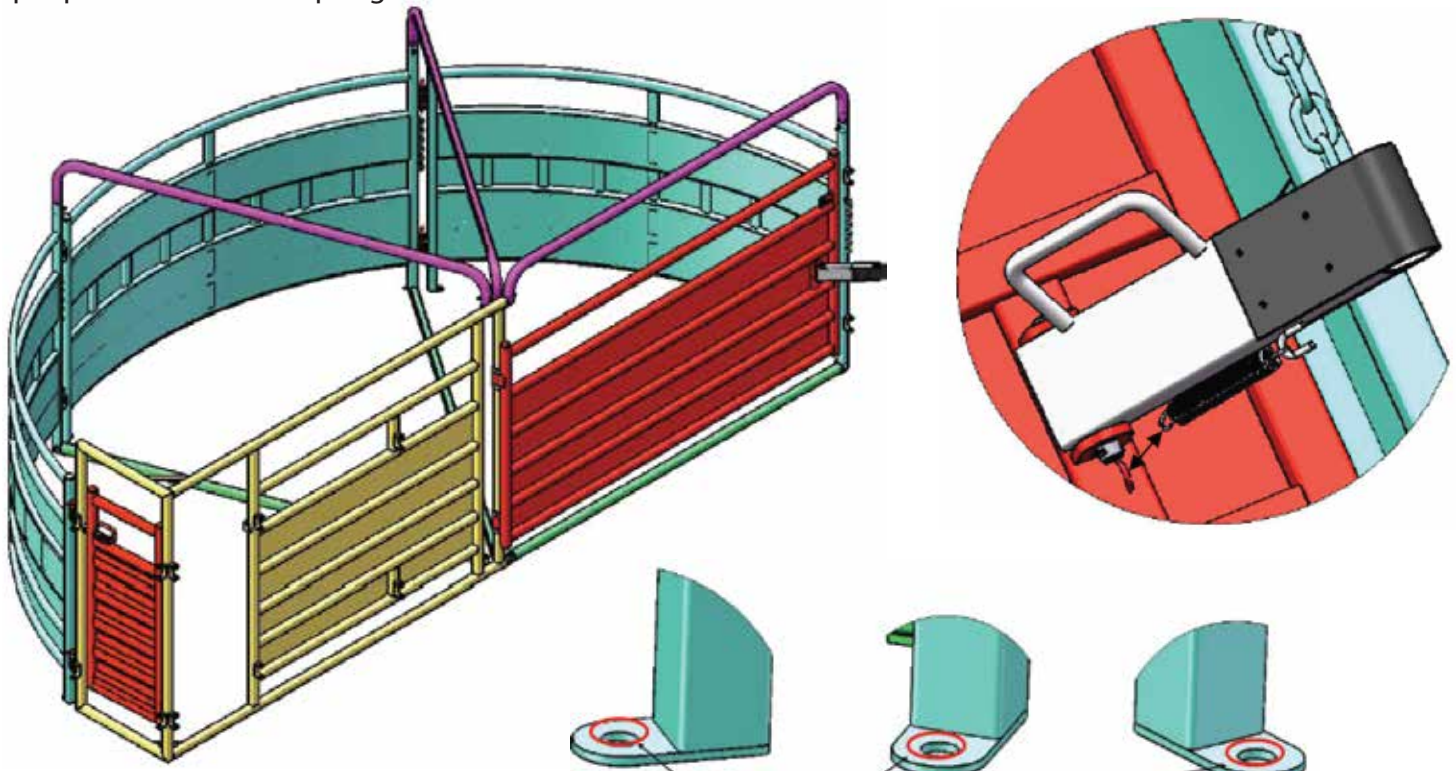


**Step 4:** Install second and third curved panel installing ground support bars and slip in drop pins all around. Then attach the 3 top support bars, to the round pins on top of the tree.

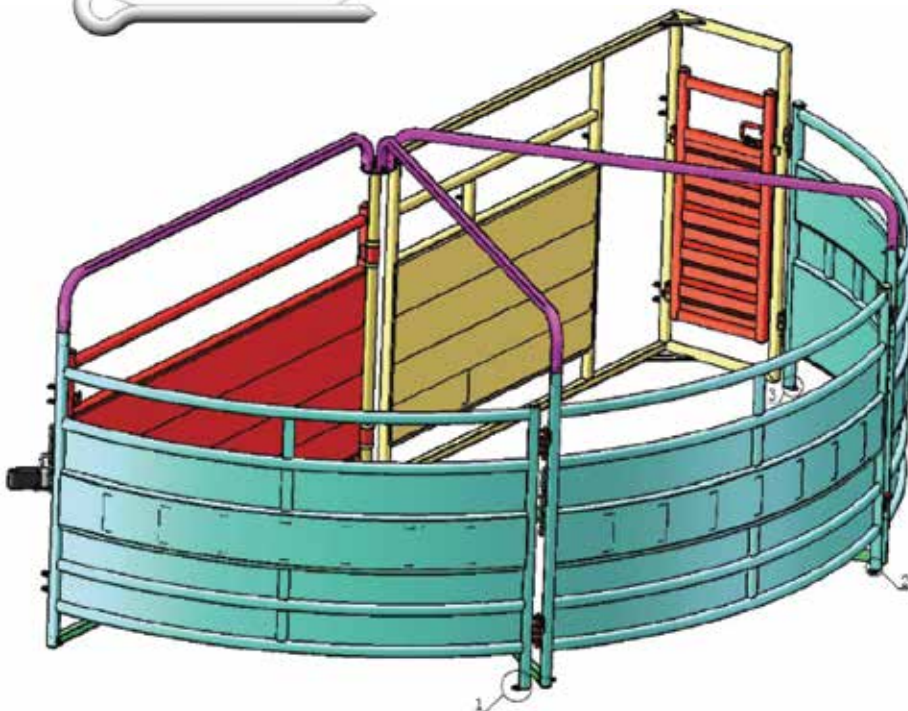




**Step 5:** This last step is to add on the push back lock on the sweep/force gate. Drop the pin in and put in the split pin. Then add the spring.



Optional Extra: You can use ground pegs to secure the Sweep Force Yard through these three holes to the ground.



**Step 6:** Sweep/Force Yard is complete move the sweep/force gate to make sure it moves around and then push back lock works and it clicks in the locking area. The sweep/force yard needs to be on level area to work properly.